

Hector Berlioz
Funeral and Triumphal Symphony

Trombone Solo.

Trauermarsch.- Marche Funèbre.- Funeral March tacet.

Leichenrede.- Oraison Funèbre.- Funeral Sermon.

Adagio non tanto.

quasi Recit.

f Fl. e Clar. *mf*

16 Clar. *p* *mf*

Clar. *Recit.* *p* Clar. *mf*

Clar. *mf* *Andantino.* *p* *espress*

poco f *p cresc. poco*

17 *poco cresc.* *mf* *p*

Andantino poco lento e sostenuto (♩ = 72)

18 *mf* *p*

f *mf*

19 *poco f* *pp* *cresc.* - *poco f* *p*

Apotheose tacet.

Hector Berlioz
Funeral and Triumphal Symphony

Trombone I.

Trauermarsch.— Marche Funèbre.— Funeral March.

Moderato un poco lento.

The musical score for Trombone I consists of 11 staves of music, numbered 1 through 11. The key signature is three flats (B-flat, E-flat, A-flat) and the time signature is 3/4. The score includes various dynamics such as *ff*, *f*, *mf*, *p*, *pp*, *cresc.*, and *dim.*. Fingerings are indicated by numbers 1-5 above notes. Performance instructions include accents (>) and slurs. The score includes parts for Flute and Clarinet (Fl. e Clar.) and Oboe and Clarinet (Ob. e Clar.).

7 1 13 14 15 16 *ff* 1 *ff*

dim. 3 5

mf *cresc.* *f* *p* 2

4 3 *f* *ff* *p*

5 1 2. #2. 3 6 14 *pp* *ff*

f cresc. 7 13 *ff* *pp*

8 13 Ob. e Clar. 9 14 15 16 *ff* 2 *ff* 1 *ff*

ff *ff* *ff* *ff* *ff*

10 2 1 *ff* *ff* *ff* *ff* *ff*

ff

11 17 Fl. e Clar. 18 19

Trombone I.

12 2 Tromboni soli.

mf *cresc. poco a poco*

f *cresc. molto* *ff*

pp *ff*

13 *sempre più f* *pp*

sempre più f *pp*

14 16 Fl. e Clar. unis. *ff* *ff*

15 *mf* *p* *f*

ff *p* *ff* *p*

Leichenrede.— Oraison Funèbre.— Funeral Sermon.

Adagio non tanto.

ff *quasi Recit.* *Trbn. solo* *ff*

16 14 *Trbn. solo* *Clar.* *Trbn. solo*

15 16 17 18 19 *p* *ff* *p* *ff* *p*

Trombone I.

Andantino poco lento e sostenuto.

Andantino. 13 17 2 1 (♩=72) 15 18 23 19 13

ff > *p* > *pp* *attacca*

Apotheose.

Allegro non troppo e pomposo.

Tamb. Tubo.

cresc. - - *ff*

20

ff

21

ff

22

f

23

ff

24

p *p* *f*

25

f *mf* > *p* *mf* > *mf* >

Trombone I.

Musical score for Trombone I, measures 27-32. The score is written in bass clef with a key signature of two flats (B-flat and E-flat). The music features various dynamics and articulations:

- Measures 27-28: *mf*, *f*, *f*, *f*. Includes first, second, and third endings.
- Measures 28-29: *p*, *mf*, *p*, *mf*, *cresc. poco a poco*.
- Measures 29-30: *f*, *cresc.*, *cresc.*.
- Measures 30-31: *ff*, *pp*, *f*, *ff*. Includes accents.
- Measures 31-32: *ff*, *ff*.

Rehearsal marks are indicated by boxed numbers: 27, 28, 29, 30, 31, and 32.

Hector Berlioz
Funeral and Triumphant Symphony

Trombone II.

Trauermarsch.- Marche Funèbre.- Funeral March.

Moderato un poco lento.

7 1 12 Fl. e Clar. 13 14 15 16 ff

ff dim. - - - - p

mf cresc. - - - -

f p f ff

p pp ff

f cresc. - - - - ff

pp 13 13 Ob. e Clar. 14 15 16

ff ff ff ff ff ff

ff ff ff ff

11 19

Detailed description: This is a page of a musical score for Trombone II, titled 'Trauermarsch.- Marche Funèbre.- Funeral March' by Hector Berlioz. The tempo is 'Moderato un poco lento'. The score consists of ten staves of music, numbered 7 through 19. The key signature has two flats (B-flat and E-flat). The music features various dynamics including fortissimo (ff), piano (p), mezzo-forte (mf), and pianissimo (pp), along with crescendos and decrescendos. There are several first endings marked with '1' and second endings marked with '2'. A woodwind entry for 'Fl. e Clar.' occurs at measure 12, and 'Ob. e Clar.' at measure 13. The score includes slurs, accents, and phrasing marks.

Trombone II.

12 9 2 Trbn. soli. 10 11 12 13 14 15 *f cresc. . . ff*

13 17 14 15 Trbn. III. 16 17 18 19

sempre più f pp

20 *ff ff*

15 *mf p f*

ff p p f

3 *ff ff p*

Leichenrede.— Oraison Funèbre.— Funeral Sermon.

Adagio non tanto.

ff

quasi Recit.

Trbn. solo. 16 14 15 16 17 Clar.

Trbn. solo. 18 19 *p ff p ff p ff p*

Andantino. 13 17 2 1 *Andantino poco lento e sostenuto.* (♩=72) 15 18 23 19 13

pp *attacca*

Apotheose.

Allegro non troppo e pomposo.

Tromb. *mf ff*

Tamb. *mf ff*

This page contains the musical score for Trombone II, measures 20 through 28. The score is written in bass clef with a key signature of two flats (B-flat and E-flat). The music features a variety of rhythmic patterns, including eighth and sixteenth notes, and rests. Dynamic markings such as *cresc.*, *ff*, *f*, *p*, and *mf* are used throughout. Measure numbers 20, 21, 22, 23, 24, 25, and 26 are indicated in boxes above the staves. Fingerings (1, 2, 3, 8) and accents (^) are also present. The score concludes with a double bar line at the end of measure 28.

Trombone II.

27

f

28

p *mf*

29

mf *cresc. poco a poco* *cresc.*

30

cresc. *ff*

31

pp *f* *pp* *f* *ff*

32

ff

Detailed description: This page contains the musical score for Trombone II, measures 27 through 32. The music is written in a single system with ten staves. The key signature has one flat (B-flat), and the time signature is 3/4. Measure 27 begins with a forte (*f*) dynamic. Measure 28 features a piano (*p*) dynamic followed by a mezzo-forte (*mf*) dynamic. Measure 29 includes a *cresc. poco a poco* (crescendo poco a poco) instruction. Measure 30 shows a *cresc.* (crescendo) leading to a fortissimo (*ff*) dynamic. Measure 31 contains a piano (*pp*) dynamic followed by a forte (*f*) dynamic, and then fortissimo (*ff*). Measure 32 continues with fortissimo (*ff*) dynamics. The score includes various musical notations such as slurs, accents, and triplets.

Hector Berlioz
Funeral and Triumphal Symphony

Trombone III.

Trauermarsch.- Marche Funèbre.- Funeral March.

Moderato un poco lento.

7 1 13 2 14 15 16 ff

dim. p

5 mf cresc.

2 4 3 f p f

5 1 ff p pp ff

6 14 ff cresc. ff

7 13 pp

8 13 Ob. e Clar. 9 14 15 16 ff p

10 ff p ff ff ff

ff p

Detailed description: This is a page of a musical score for Trombone III, titled 'Trauermarsch.- Marche Funèbre.- Funeral March' by Hector Berlioz. The tempo is 'Moderato un poco lento'. The score consists of ten staves of music. The first staff begins at measure 7 and includes first and second endings. The second staff features a dynamic change from *dim.* to *p*. The third staff starts at measure 5 with a *mf* dynamic and a *cresc.* marking. The fourth staff has dynamics of *f*, *p*, and *f*. The fifth staff starts with *ff*, then *p*, *pp*, and ends with *ff*. The sixth staff begins with *ff* and a *cresc.* marking, ending with *ff*. The seventh staff starts with *pp* and ends with *ff*. The eighth staff includes a section for 'Ob. e Clar.' starting at measure 13, with dynamics of *ff* and *p*. The ninth and tenth staves feature complex rhythmic patterns with triplets and dynamics of *ff* and *p*.

Trombone III.

ff p > ff p > ff p > ff p >

ff ff ff

11 19 12 9 2 Trbn. soli. 10 11 12 13 14 15

fresc. - - - ff pp ff

13 17 14 10 11 12 13 14

sempre più f pp Ob. e Clar.

15 p f

1 2 3 4 5 6

15 mf p f

ff p p ff p

Leichenrede.- Oraison Funèbre.- Funeral Sermon.

Adagio non tanto.

quasi Recit.

ff Trbn. solo. 1 1

16 14 Trbn. solo. Clar. Trbn solo. 15 16 17 18 19

p ff p ff p ff p pp

Andantino. 12

Trombone III.

Andantino poco lento e sostenuto. (♩=72)

17 15 18 23 19 13

p *mf* *p* *attacca*

Detailed description: This block contains the first system of music for measures 15 through 19. It is written on a single bass clef staff. Measure 15 starts with a piano (*p*) dynamic and a half note. Measure 16 has a mezzo-forte (*mf*) dynamic and a half note. Measure 17 has a piano (*p*) dynamic and a half note. Measure 18 is a whole rest. Measure 19 is a whole rest. Measure 20 is a whole rest. Measure 21 is a whole rest. Measure 22 is a whole rest. Measure 23 is a whole rest. The section ends with an *attacca* marking.

Apotheose.

Allegro non troppo e pomposo.

1 2 3 4

Tamb. Trbc.

mf *ff*

cresc.

20

ff

ff

21

ff

22

8 *f*

f

23

ff

24

p *p*

25

3 *f* 2

Detailed description: This block contains the second system of music for measures 20 through 25. It is written on a single bass clef staff. Measure 20 starts with a fortissimo (*ff*) dynamic and a half note. Measure 21 has a fortissimo (*ff*) dynamic and a half note. Measure 22 has a fortissimo (*ff*) dynamic and a half note. Measure 23 has a fortissimo (*ff*) dynamic and a half note. Measure 24 has a piano (*p*) dynamic and a half note. Measure 25 has a piano (*p*) dynamic and a half note. The section includes various dynamics, accents, and articulations.

Trombone III.

Musical score for Trombone III, measures 26-32. The score is written in bass clef with a key signature of one flat (B-flat). It includes various dynamics such as *mf*, *p*, *f*, *ff*, *pp*, and *cresc. poco a poco*. The notation features triplets, slurs, and accents. Measure numbers 26, 27, 28, 29, 30, 31, and 32 are indicated in boxes. The score concludes with a double bar line.

Hector Berlioz
Funeral and Triumphal Symphony

GRAND TROMBONE BASSE.

à n. obligé.

Moderato un poco lento

MARCHE FUNEBRE.

oboi et clar:

47

5

3

10

15

20

25

26

1^{re} tromb: soli.

cres

49

oboi et clar:

2

1

2

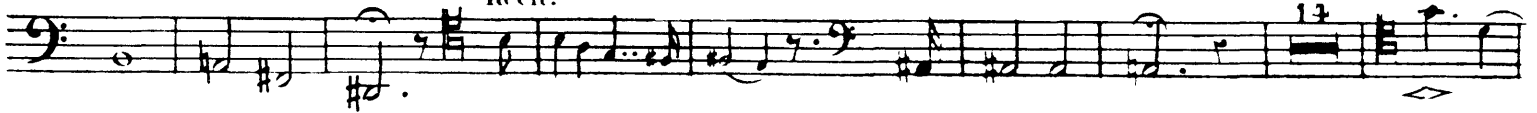
GRAND TROMBONE BASSE .

Adagio non tanto.

ORAISON FUNÈBRE .



Recit.



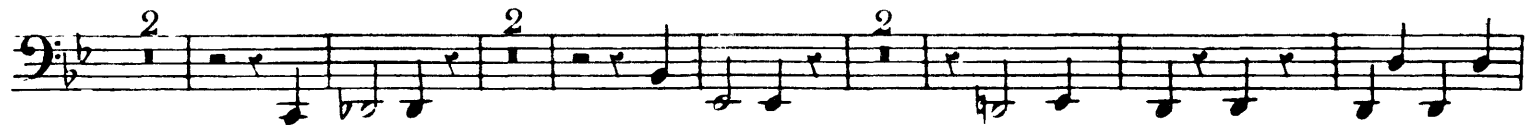
Andantino.



And. poco lento e sostenuto

APOTHEOSE .

All. non troppo e pomposo.



Musical score for Grand Trombone Bass, measures 1-13. The score is written in bass clef with a key signature of one flat (B-flat). The notation includes various dynamics such as *ff*, *mf*, *f*, *p*, and *cres.* (crescendo). It also features articulation marks like accents (^) and slurs, as well as fingerings (1, 2, 3, 7) and breath marks (>). The score concludes with a double bar line and a repeat sign.

Hector Berlioz
Funeral and Triumphal Symphony

Tuba I.

Trauermarsch.- Marche Funèbre.- Funeral March.

Moderato un poco lento.

4 **1**

p

cresc. poco a poco - - - - - *f*

2

ff *ff*

3

dim. - - - - - *p*

cresc. - - - - -

4

f *p* *f* *p*

5

ff *p* *pp*

6 1 2 3

ff *p*

4 5 6 7 8 9 10 11 12 13 14 15 16

cresc. poco a poco - - - - - *f*

17 18 1 2 3 4 5 **7** 13 **8** 13

ff *pp*

Tuba I.

Ob. e Clar.

14 15 16

9

10

11

cresc. poco a poco

12

1 2 3 4 5

6 7 8 9 10 11 12 13 14 15 16 17 18 1

cresc. poco a poco - - - - - *fcresc.* - - - - - *ff*

2 3 4 5 1 2 3

13

pp ff sempre più f pp

p cresc. f dim.

14

p sf meno f pp

Musical score for Tuba I, measures 1-15. The score is written in bass clef with a key signature of two flats (B-flat and E-flat). It features various dynamics including *p*, *pp*, *ff*, *f*, and *mf*. Measure numbers 1 through 15 are indicated above the staves. The notation includes eighth and sixteenth notes, rests, and slurs.

Leichenrede.- Oraison Funèbre.- Funeral Sermon.

Adagio non tanto.

Musical score for Tuba I, measures 16-18. The score is written in bass clef with a key signature of two flats. It includes the instruction *Andantino* and *Andantino poco lento e sostenuto.* (♩ = 72). Measure numbers 12, 13, 14, 15, 16, 17, and 18 are indicated. The notation includes half notes, quarter notes, and eighth notes, with dynamics such as *ff*, *p*, and *pp*. A *Tromba* part is also indicated.

Tab. I.

19

p *pp* *pp dim.* *ppp* *attacca*

Apotheose.
Allegro non troppo e pomposo.

14 20

ppp *mf* *cresc.* *ff*

ff

ff

21

ff

22

f

23

f

ff

ff

24

p

f

25

p *mf*

26

cresc. poco a poco *mf* *mf* *f*

27

28

29

30

31

32

mf *p* *mf* *p* *mf* *cresc. poco a poco*

cresc. *ff* *pp* *f*

ff *ff*

Detailed description: This page contains the musical score for the Tuba I part of the Funeral and Triumphal Symphony, measures 27 through 32. The score is written in bass clef with a key signature of two flats (B-flat and E-flat). It consists of ten staves of music. Measures 27 and 28 are marked with a box containing the measure number. Dynamic markings include *mf*, *p*, *cresc. poco a poco*, *cresc.*, *ff*, and *pp*. There are also accents and slurs throughout the piece. The music features a mix of eighth and sixteenth notes, with some triplet markings in measures 31 and 32.

Hector Berlioz
Funeral and Triumphal Symphony

Tuba II

Trauermarsch.- Marche Funèbre.- Funeral March.

Moderato un poco lento.

4

1

p

cresc. poco a poco

f

2

ff

ff

dim.

3

p

2

cresc.

f

p

4

f

p

1

5

ff

p

pp

1

6

ff

p

1 2 3 4

5 6 7 8 9 10 11 12 13 14 15 16

cresc. poco a poco

f

17 18 1 2 3 4 5 7 13 8 13

ff

pp

Tuba II.

Ob. e Clar.

This page contains the musical score for the Tuba II part, spanning measures 14 to 18, 9 to 11, 12 to 14, and 14. The score is written in bass clef with a key signature of two flats (B-flat and E-flat). It includes various dynamic markings such as *ff*, *p*, *cresc. poco*, *a poco*, *sempre più f*, and *dim.*. Measure numbers are indicated in boxes at the beginning of the staves: 14, 15, 16, 9, 10, 11, 12, and 14. The score features complex rhythmic patterns, including triplets and sixteenth notes, and dynamic swells. The final measure (14) is marked with accents and a *dim.* instruction.

meno f *pp* *f* *ff* *p*

1 2 3 4 5 6 7

1 2 3 4 5 6

15

Leichenrede.- Oraison Funèbre.- Funeral Sermon.

Adagio non tanto.

ff *mf* *p* *pp*

Trbn.

15 **16** **17** **18**

Andantino poco lento e sostenuto. (♩ = 72)

p *poco f*

18 **19** **20** **21**

Tuba II.

19

p *pp* *pp dim.* *ppp* *attacca*

Apotheose.
Allegro non troppo e pomposo.

15 Tba. I. 20

ppp *ff*

ff

21

ff

8 22

f

23

p

ff

ff

24 4

p

f

25

f

mf

p *mf* *cresc. poco a poco* *mf* *mf*

mf

Tuba II.

26

27

28

29

30

31

32

f

p

mf

cresc. poco

a poco

cresc.

ff

pp

f

ff

ff

ff

ff

ff

ff

The image shows a page of musical notation for the Tuba II part of Berlioz's Funeral and Triumphal Symphony. The score consists of ten staves of music, numbered 26 through 32. The notation includes various musical symbols such as notes, rests, and dynamic markings. The key signature is one flat (B-flat major/D minor). The time signature is 3/4. The score is written in bass clef. The dynamics range from *pp* (pianissimo) to *ff* (fortissimo). The score includes various musical notations such as accents, slurs, and phrasing slurs. The page is numbered 5 in the top right corner.